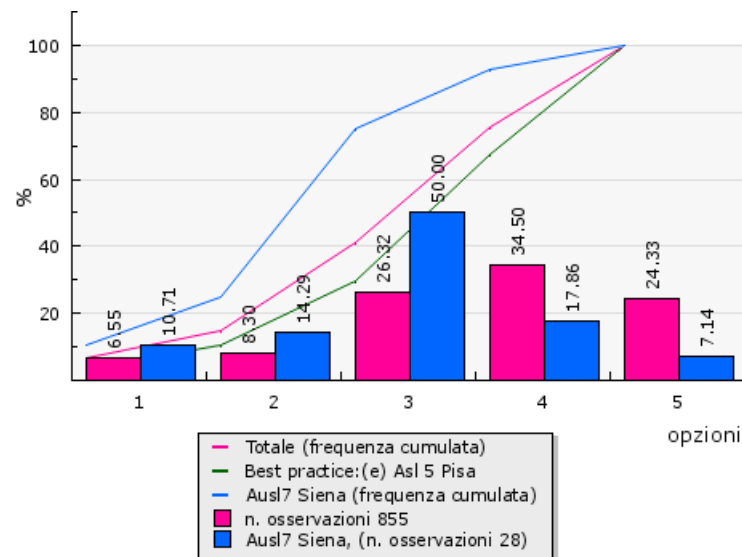
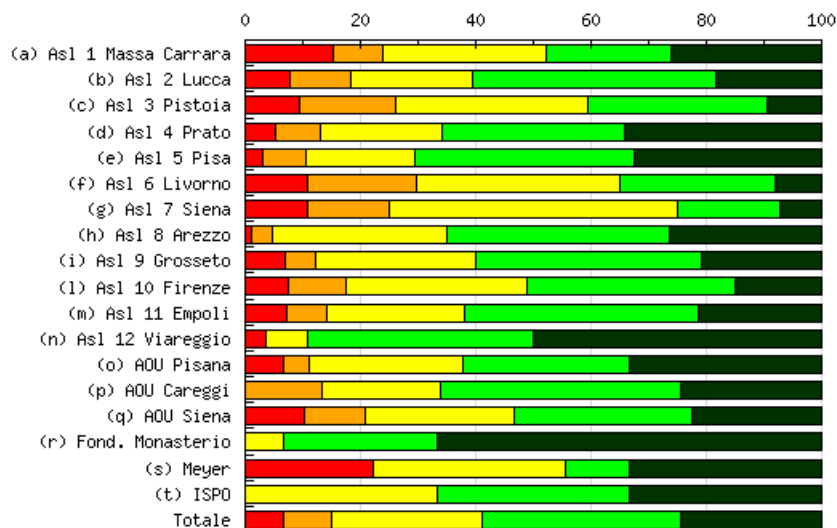


## Sezione 8: Epilogo

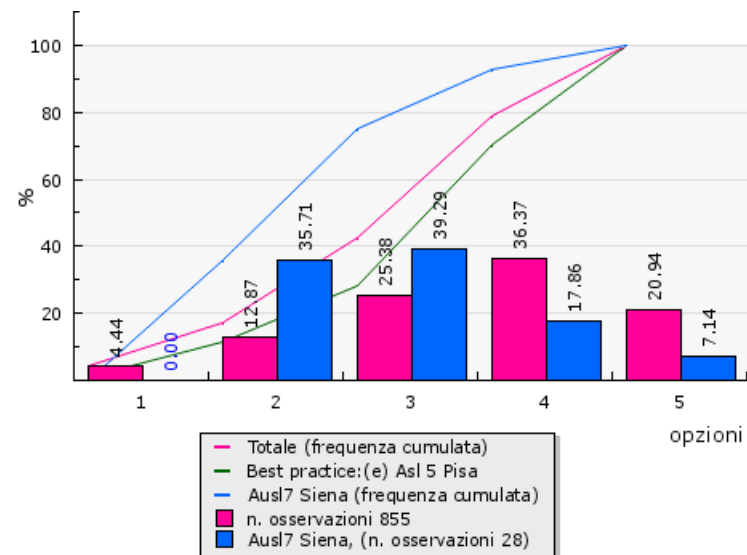
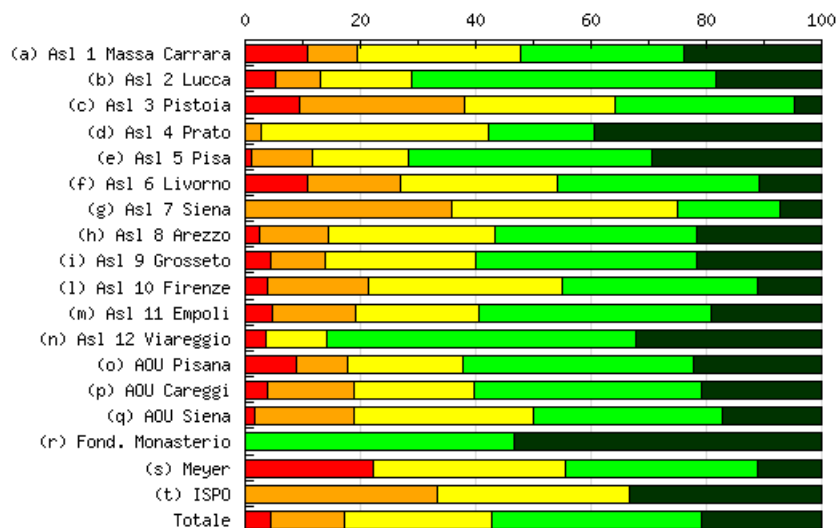
Consiglierei ad un collega di lavorare nella mia stessa azienda



Risposte (1 - totalmente in disaccordo, 5 - totalmente d'accordo)

Aziende	1 (%)	2 (%)	3 (%)	4 (%)	5 (%)	N. osservazioni	Media	Deviazione Std.	% partecipazione
(a) Asl 1 Massa Carrara	7 15,22%	4 8,70%	13 28,26%	10 21,74%	12 26,09%	46	3,35	1,35	92,00%
(b) Asl 2 Lucca	3 7,89%	4 10,53%	8 21,05%	16 42,11%	7 18,42%	38	3,53	1,14	73,08%
(c) Asl 3 Pistoia	4 9,52%	7 16,67%	14 33,33%	13 30,95%	4 9,52%	42	3,14	1,10	62,69%
(d) Asl 4 Prato	2 5,26%	3 7,89%	8 21,05%	12 31,58%	13 34,21%	38	3,82	1,14	82,61%
(e) Asl 5 Pisa	3 3,16%	7 7,37%	18 18,95%	36 37,89%	31 32,63%	95	3,89	1,04	92,23%
(f) Asl 6 Livorno	4 10,81%	7 18,92%	13 35,14%	10 27,03%	3 8,11%	37	3,03	1,10	48,68%
(g) Asl 7 Siena	3 10,71%	4 14,29%	14 50,00%	5 17,86%	2 7,14%	28	2,96	1,02	73,68%
(h) Asl 8 Arezzo	1 1,20%	3 3,61%	25 30,12%	32 38,55%	22 26,51%	83	3,86	0,89	54,25%
(i) Asl 9 Grosseto	8 6,96%	6 5,22%	32 27,83%	45 39,13%	24 20,87%	115	3,62	1,08	88,46%
(l) Asl 10 Firenze	6 7,50%	8 10,00%	25 31,25%	29 36,25%	12 15,00%	80	3,41	1,09	59,70%
(m) Asl 11 Empoli	3 7,14%	3 7,14%	10 23,81%	17 40,48%	9 21,43%	42	3,62	1,11	71,19%
(n) Asl 12 Viareggio	1 3,57%	--	2 7,14%	11 39,29%	14 50,00%	28	4,32	0,89	84,85%
(o) AOU Pisana	3 6,67%	2 4,44%	12 26,67%	13 28,89%	15 33,33%	45	3,78	1,15	42,45%
(p) AOU Careggi	--	7 13,21%	11 20,75%	22 41,51%	13 24,53%	53	3,77	0,96	49,07%
(q) AOU Siena	6 10,34%	6 10,34%	15 25,86%	18 31,03%	13 22,41%	58	3,45	1,23	63,74%
(r) Fond. Monasterio	--	--	1 6,67%	4 26,67%	10 66,67%	15	4,60	0,61	75,00%
(s) Meyer	2 22,22%	--	3 33,33%	1 11,11%	3 33,33%	9	3,33	1,49	42,86%
(t) ISPO	--	--	1 33,33%	1 33,33%	1 33,33%	3	4,00	0,82	50,00%
<b>Totale</b>	<b>56 6,55%</b>	<b>71 8,30%</b>	<b>225 26,32%</b>	<b>295 34,50%</b>	<b>208 24,33%</b>	<b>855</b>	<b>3,62</b>	<b>1,13</b>	<b>66,13%</b>

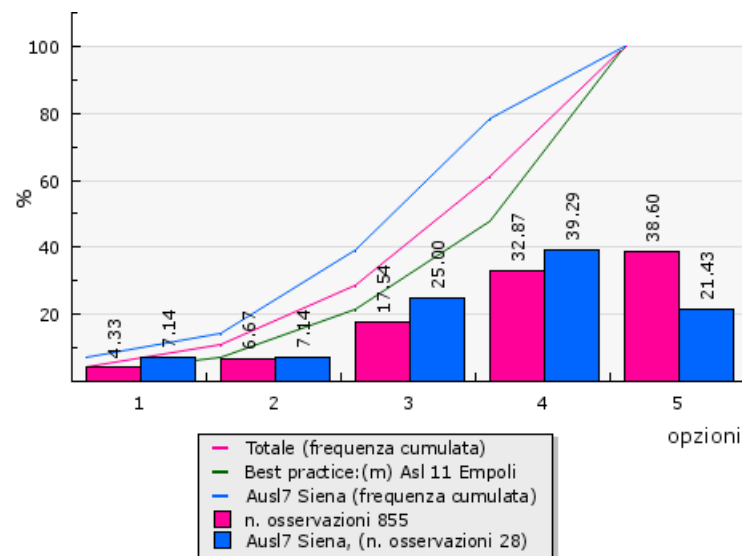
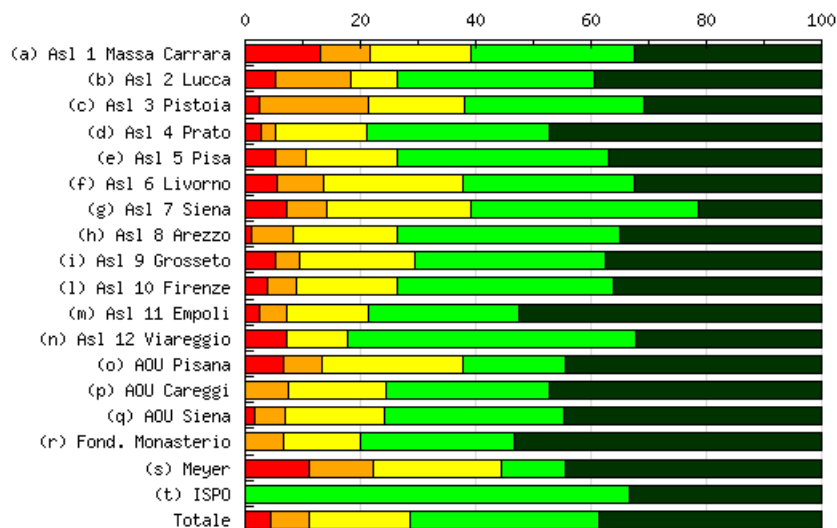
In generale mi ritengo soddisfatto della mia azienda



Risposte (1 - totalmente in disaccordo, 5 - totalmente d'accordo)

Aziende	1 (%)	2 (%)	3 (%)	4 (%)	5 (%)	N. osservazioni	Media	Deviazione Std.	% partecipazione
(a) Asl 1 Massa Carrara	5 10,87%	4 8,70%	13 28,26%	13 28,26%	11 23,91%	46	3,46	1,25	92,00%
(b) Asl 2 Lucca	2 5,26%	3 7,89%	6 15,79%	20 52,63%	7 18,42%	38	3,71	1,02	73,08%
(c) Asl 3 Pistoia	4 9,52%	12 28,57%	11 26,19%	13 30,95%	2 4,76%	42	2,93	1,08	62,69%
(d) Asl 4 Prato	--	1 2,63%	15 39,47%	7 18,42%	15 39,47%	38	3,95	0,94	82,61%
(e) Asl 5 Pisa	1 1,05%	10 10,53%	16 16,84%	40 42,11%	28 29,47%	95	3,88	0,98	92,23%
(f) Asl 6 Livorno	4 10,81%	6 16,22%	10 27,03%	13 35,14%	4 10,81%	37	3,19	1,16	48,68%
(g) Asl 7 Siena	--	10 35,71%	11 39,29%	5 17,86%	2 7,14%	28	2,96	0,91	73,68%
(h) Asl 8 Arezzo	2 2,41%	10 12,05%	24 28,92%	29 34,94%	18 21,69%	83	3,61	1,03	54,25%
(i) Asl 9 Grosseto	5 4,35%	11 9,57%	30 26,09%	44 38,26%	25 21,74%	115	3,63	1,06	88,46%
(l) Asl 10 Firenze	3 3,75%	14 17,50%	27 33,75%	27 33,75%	9 11,25%	80	3,31	1,01	59,70%
(m) Asl 11 Empoli	2 4,76%	6 14,29%	9 21,43%	17 40,48%	8 19,05%	42	3,55	1,10	71,19%
(n) Asl 12 Viareggio	1 3,57%	--	3 10,71%	15 53,57%	9 32,14%	28	4,11	0,86	84,85%
(o) AOU Pisana	4 8,89%	4 8,89%	9 20,00%	18 40,00%	10 22,22%	45	3,58	1,18	42,45%
(p) AOU Careggi	2 3,77%	8 15,09%	11 20,75%	21 39,62%	11 20,75%	53	3,58	1,09	49,07%
(q) AOU Siena	1 1,72%	10 17,24%	18 31,03%	19 32,76%	10 17,24%	58	3,47	1,02	63,74%
(r) Fond. Monasterio	--	--	--	7 46,67%	8 53,33%	15	4,53	0,50	75,00%
(s) Meyer	2 22,22%	--	3 33,33%	3 33,33%	1 11,11%	9	3,11	1,29	42,86%
(t) ISPO	--	1 33,33%	1 33,33%	--	1 33,33%	3	3,33	1,25	50,00%
<b>Totale</b>	<b>38 4,44%</b>	<b>110 12,87%</b>	<b>217 25,38%</b>	<b>311 36,37%</b>	<b>179 20,94%</b>	<b>855</b>	<b>3,56</b>	<b>1,09</b>	<b>66,13%</b>

Sono orgoglioso di lavorare per il sistema sanitario toscano



Risposte (1 - totalmente in disaccordo, 5 - totalmente d'accordo)

Aziende	1 (%)	2 (%)	3 (%)	4 (%)	5 (%)	N. osservazioni	Media	Deviazione Std.	% partecipazione
(a) Asl 1 Massa Carrara	6 13,04%	4 8,70%	8 17,39%	13 28,26%	15 32,61%	46	3,59	1,36	92,00%
(b) Asl 2 Lucca	2 5,26%	5 13,16%	3 7,89%	13 34,21%	15 39,47%	38	3,89	1,21	73,08%
(c) Asl 3 Pistoia	1 2,38%	8 19,05%	7 16,67%	13 30,95%	13 30,95%	42	3,69	1,16	62,69%
(d) Asl 4 Prato	1 2,63%	1 2,63%	6 15,79%	12 31,58%	18 47,37%	38	4,18	0,97	82,61%
(e) Asl 5 Pisa	5 5,26%	5 5,26%	15 15,79%	35 36,84%	35 36,84%	95	3,95	1,10	92,23%
(f) Asl 6 Livorno	2 5,41%	3 8,11%	9 24,32%	11 29,73%	12 32,43%	37	3,76	1,15	48,68%
(g) Asl 7 Siena	2 7,14%	2 7,14%	7 25,00%	11 39,29%	6 21,43%	28	3,61	1,11	73,68%
(h) Asl 8 Arezzo	1 1,20%	6 7,23%	15 18,07%	32 38,55%	29 34,94%	83	3,99	0,96	54,25%
(i) Asl 9 Grosseto	6 5,22%	5 4,35%	23 20,00%	38 33,04%	43 37,39%	115	3,93	1,10	88,46%
(l) Asl 10 Firenze	3 3,75%	4 5,00%	14 17,50%	30 37,50%	29 36,25%	80	3,98	1,04	59,70%
(m) Asl 11 Empoli	1 2,38%	2 4,76%	6 14,29%	11 26,19%	22 52,38%	42	4,21	1,01	71,19%
(n) Asl 12 Viareggio	2 7,14%	--	3 10,71%	14 50,00%	9 32,14%	28	4,00	1,04	84,85%
(o) AOU Pisana	3 6,67%	3 6,67%	11 24,44%	8 17,78%	20 44,44%	45	3,87	1,24	42,45%
(p) AOU Careggi	--	4 7,55%	9 16,98%	15 28,30%	25 47,17%	53	4,15	0,96	49,07%
(q) AOU Siena	1 1,72%	3 5,17%	10 17,24%	18 31,03%	26 44,83%	58	4,12	0,98	63,74%
(r) Fond. Monasterio	--	1 6,67%	2 13,33%	4 26,67%	8 53,33%	15	4,27	0,93	75,00%
(s) Meyer	1 11,11%	1 11,11%	2 22,22%	1 11,11%	4 44,44%	9	3,67	1,41	42,86%
(t) ISPO	--	--	--	2 66,67%	1 33,33%	3	4,33	0,47	50,00%
<b>Totale</b>	<b>37 4,33%</b>	<b>57 6,67%</b>	<b>150 17,54%</b>	<b>281 32,87%</b>	<b>330 38,60%</b>	<b>855</b>	<b>3,95</b>	<b>1,10</b>	<b>66,13%</b>